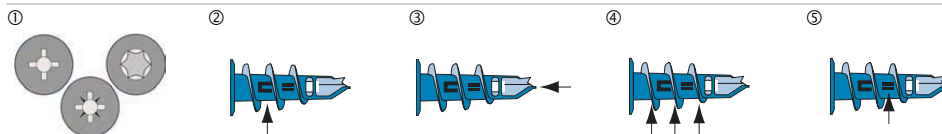


No.	Name	Material
1	Jet Plug 14 x 39	Zinc die-casting
2	Jet Plug 14 x 32	Zinc die-casting
3	Jet Plug 13 x 25	Zinc die-casting

Building materials

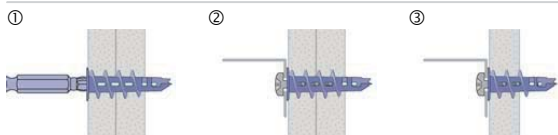


Characteristics



- ① The Jet Plug can be used with all types of screw bits.
- ② Back twist lock permits the disassembly of screws without the movement of the plug.
- ③ No pre-drilling necessary in thermalite blocks.
- ④ Thin cutting thread secures a non-expansion hold in soft building materials.
- ⑤ Drilling-dust pockets allow ramming of building material.
 - Enhanced application e.g. in gypsum high-density boards.

Applications

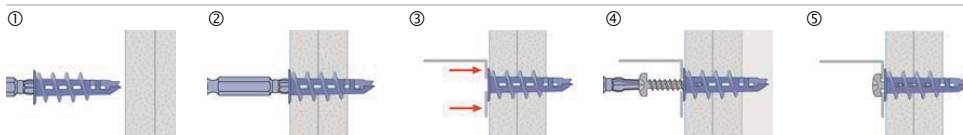


- ① In plasterboard and thermalite blocks, screw the plug directly into the base materials.
- ② Jet Plug 14 x 32 and 14 x 39 for thick materials or double thickness plasterboard.
- ③ Position the element to be fixed, Jet Plug 13 x 25 for thin base materials or with reduced cavities.

For use in: plasterboards, gypsum Fiber boards, double plasterboards, cement Fiber plates and thermalite block.

For fixings of: cable channels, curtain rails, lamps, switches, picture frames.

Installation



(For use in gypsum high-density board, a 6mm pre-drilled hole is required)

- ① Place the Jet Plug on a Duo-Bit.
- ② Screw the Jet Plug directly into the base material, until the collar is flush with the surface. „The collar must not be inserted below the surface of the base material“.
- ③ Position the element to be fixed.
- ④ Insert the screw using the bit.
- ⑤ The Building materials may only bear on the plug collar.

All information detailed in our data sheets is based on technical approvals, formulas and site and laboratory testing under optimum conditions and include a stated safety factor. As we have no direct or indirect control over where or how our products are applied or installed, we do not accept any liability either directly or indirectly arising from the use of our products, whether or not in accordance with any advice, specification or recommendation given by us and we recommend site testing of all products for suitability.

Plug size		25	32	39
Recommended tension loads ¹⁾ :				
N _{Emp}	- Gypsum plasterboard d = 12.5 mm	0.1	0.1	0.1
	- Gypsum Fiber board	0.15	0.15	0.15
	- Thermalite block	0.1	0.1	0.1
	- Gypsum (6 mm pre-drilling)	-	-	0.22
Resistance tension loads ²⁾ :				
N _{Rd}	- Gypsum plasterboard d = 12.5 mm	0.098	0.098	0.098
	- Gypsum Fiber board d = 2 x12.5 mm	-	-	0.14
	- Plasterboard 100 mm Ø 6 mm pre-drilled	-	-	0.126
Resistance shear loads ²⁾ :				
V _{Rd}	- Gypsum plasterboard d = 12.5 mm	0.252	0.252	0.252
	- Gypsum plasterboard d = 2 x12.5 mm	-	-	0.378
	- Plasterboard 100 mm Ø 6 mm pre-drilled	-	-	0.126
d _s	For screw size	M 4	4	4
	For screw-Ø	mm 4-4.5	4-4.5	4- 4.5
d _k	Plug collar-Ø	mm 13	14	14
l	Plug length	mm 25	32	39



Jet Plug

- 1) Safety factor 3
- 2) Without influence of anchor and edge distance

Duo-Bit

The Duo-Bit, for the efficient fixing of Jet Plugs and screws.

